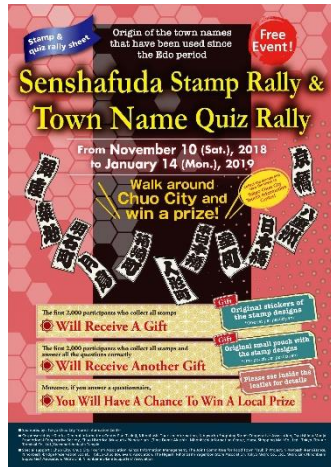


# Senshafuda Stamp Rally & Town Name Quiz Rally

“The Senshafuda Stamp Rally” will be held from Saturday, November 10th, 2018 to Saturday, January 14th, 2019. This is an event to visit 11 places within Chuo City and collect stamps and answer questions. The 11 places are Ginza, Tsukiji, Akashicho, Tukishima, Hakozaicho, Ningyocho, Higashi-Nihonbashi, Takaracho, Nihonbashi, Yaesu, and Kyobashi.



You will get an original prize when you collect 7 stamps. (While 2000 supplies last)

In addition, you will get another prize when you get the correct answers for the 5 questions. (While 2000 supplies last)

You may also join the lottery if you answer our questionnaire!

Enjoy the Stamp Rally while sightseeing Chuo City!  
(More details are provided below.)

## Date

---

9:00 a.m. Saturday, November 10th, 2018 ~ 9:00 p.m. Saturday, January 14th, 2019

✂To receive the gift and join the lottery, please visit Tokyo Chuo City Tourist Information Center by 9:00 p.m. Tuesday, January 15th, 2019.

## How to participate

---

1) First, pick up the stamp book and start the “Senshafuda Stamp rally!”

2) Go to each stamp and quiz location, collect the stamps and answer the questions!

3) You will get an original prize when you collect 7 stamps. (While 2000 supplies last)

In addition, you will get another prize when you get the correct answers for the 5 questions. (While 2000 supplies last)

Come to “Tokyo Chuo City Tourist Information Center” with your stamp book completed.

4) You may also join the lottery if you answer our questionnaire!

You will have a chance to win an original prize of Chuo City. Let’s give it a try!!

## Stamp Locations • Reception Hours

---

- General Information Center Plat Tsukiji : 8:00~14:00 (Wed•Sun•National Holiday:10:00~14:00) ※Holiday:12/31~1/4
- Nihonbashi Tourism Information : 10:00~17:00 ※Holiday:1/1
- Tsukishima Monja Promotional Cooperative Society : 12:30~19:30 (1/3~1/7:12:30~18:30) ※Holiday:12/31~1/2
- Nihonbashi Information Center : 10:00~21:00 (1/1:10:00~17:00) ※Holiday:open all year round
- YAESU SHOPPING MALL : 10:00~20:00 (12/31•1/2:10:00~18:00) ※Holiday:1/1
- Tokyo City Air Terminal: 5:00~22:00 ※Holiday:open all year round
- Tokyo Chuo City Tourist Information Center: 9:00~21:00 ※Holiday:open all year round

## Quiz Locations • Reception Hours

---

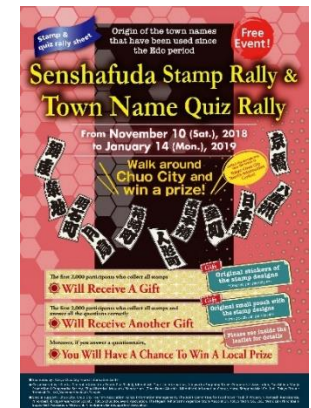
- G Info: all day ※Holiday:When TOKYU PLAZA GINZA is closed (During the period, the quiz will be posted outside all day)
- In front of Ningyocho Shopping Street Cooperative Association office(Under the Ogannonji Temple): all day  
※Holiday:Sat•Sun•National Holiday•New Year's Holiday (During the period, the quiz will be posted outside all day)
- Chuo Historical Museum / Planetarium (Time Dome Akashi): 10:00~19:00 (Sat•Sun•National Holiday:10:00~17:00)  
※Holiday:Mondays (When Monday falls on a public holiday, it will be closed on the following business day), 12/29~1/4 (Not available on holidays)
- Yagenbori-hudouin Temple: all day ※Holiday:Open all year round (During the period, the quiz will be posted outside all day)
- Tokyo Chuo City Tourist Information Center: 9:00~21:00 ※Holiday:Open all year round (During the period, the quiz will be posted outside all day)

## Quiz sheet distribution locations • Stamp locations

---

- At every stamp locations
  - At every quiz locations
  - At Chuo City Tourism Association Office
  - At Chuo City Office
  - On the bus of Metro Link Nihonbashi (This is limited to some vehicles)
  - On the bus of Metro Link Nihonbashi E-line (This is limited to some vehicles)
  - At all stations of Tokyo Metro Line
- ※For other distribution places, please contact Chuo City Tourist Information Center.

※The number of sheets of the quiz rally is limited. We kindly ask for your understanding.



## Where to receive your prizes and join the lottery

---

At Tokyo Chuo City Tourist Information Center (Open: 9:00-21:00      Tel: 03-6262-6481)

※The final DEADLINE is 9:00 p.m. Tuesday, January 15th, 2019.

(Stamps and Quizzes will be set and posted until 9:00 p.m. Saturday, January 14th, 2019.)

※The first 2,000 arrivals will be able to get the prizes.

## Participation Fee

---

Free

## Notes

---

• You can receive the prizes and can join the lottery if you complete the stamps, quizzes and questionnaire. However, limited to once per person.

※We do not accept exchanging prizes for more than twice, or bringing in two or more sheets per person.

We would like to give prizes to as many participants as possible who joined this event. Thank you for your understanding.

• "Tokyo Chuo City Tourist Information Center" is the only place where you will be able to receive the prizes and join the lottery.

DO NOT FORGET to visit our center by 9:00 p.m. Tuesday, January 15th, 2019.

※Even if you have completed your work, we do not accept to exchange the prizes if you come after January 15th.

• PLEASE check the holidays of each location, especially during Year-end and New year holidays. Each location has different business hours.

## Event Summary

---

- Sponsored by : Tokyo Chuo City Tourist Information Center
- Cosponsored by : G Info, General Information Center Plat Tsukiji, Nihonbashi Tourism Information, Ningyocho Shopping Street Cooperative Association, Tsukishima Monja Promotional Cooperative Society, Chuo Historical Museum / Planetarium (Time Dome Akashi), Nihonbashi Information Center, Yaesu shopping mall Co., Ltd., Tokyo City Air Terminal Co.,Ltd., Yagenbori-hudouin Temple
- Special support: Chuo City, Chuo City Tourism Association, Ginza Information Management, The Joint Committee for Food Town 'Tsukiji' Project, Nihonbashi-Renaissance, Nihonbashi-bridge Preservation Society, Tokyo Chuo Boulevard Association, The Higashi Nihonbashi Yagenbori Store Association, Tokyo Metro Co., Ltd., Metro Link Nihonbashi Supporters' Association, Metro Link Nihonbashi E-line Supporters' Association
- When (Start) : 2018/11/10 (Sat)  
(Finish) : 2019/1/14 (Mon, National holiday)

※ The final DEADLINE is 9:00 p.m. Tuesday, January 15th, 2019.

## Contact

Telephone Number	03-6262-6481
Address	The first basement floor of KYOBASHI EDOGRAND (Address: 2-2-1, Kyobashi, Chuo-ku, Tokyo)
Website URL	<a href="https://centraltokyo-tourism.com/">https://centraltokyo-tourism.com/</a>
Access	Directly connected from the Kyobashi sta. Exit8 on the Tokyo Metro Ginza Line In front of Kyobashi 2-chome bus stop on the Metro Link Nihonbashi  ※Other neighbor stations A three min. walk from Takaracho sta. Exit A5 or A6 on the Toei Asakusa Line A five min. walk from Tokyo sta. Yaesu South Exit on the JR Line A five min. walk from Ginza-itchoe Sta. Exit7 on the Tokyo Metro Yurakucho Line
Fee	Free
Business hour	9:00~21:00
Holiday	open all year round (※Open everyday during this event period)
Sponsor	Tokyo Chuo City Tourist Information Center